



**SMALL  
PLACES**  
lugarcitos

Finca Tres Robles  
257 N. Greenwood St.  
Houston, TX 77011



# Annual Report

[www.smallplaces.org](http://www.smallplaces.org)

# 2022



@fincatresrobles  
@smallplacesmatter





# Foreword

Dear Friends and Neighbors,

2022 was a time of inspiration, innovation and transformation for us here at Small Places. We reflect back at the past 8 years spent operating as an LLC, cultivating healthy neighborhoods through urban farming in Houston's East End. We are excited to announce that as of May 2022, Small Places officially began operating as a 501(c)(3) nonprofit organization. This transition to non-profit allows us to grow the capacity of our organization by securing more funding to expand our farm's staff, infrastructure, and subsidized programming.

On September 1st 2022, we officially began our 40 year land agreement with Harris County. Our new 1.5 acre piece of land located at 6000 Canal street, only one block from the old farm, is the new home for our urban farm, Finca Tres Robles. Land security remains one the biggest barriers to urban farming in Houston and as we enter into a 40 year lease on this new piece of land, we recognize the magnitude of this opportunity. This achievement is a reflection of the impact the farm has had since its founding as well as the community's support for the integral and worthy part it plays in the East End community.

On October 15th, we launched our "First of Many" capital campaign with our community at the new property. We are raising \$2.7 million dollars from philanthropy to develop this first of many future Small Places' farms. We invest in small solutions as the pathway to realizing larger long-term structural change and this long-term land agreement provides a vital missing piece to allow our organization to carry out our mission in its fullest capacity.

While much of our onsite programming has been put on hold during our transition, we have continued to run our subsidized Neighborhood Produce Program that brings fresh and locally sourced produce, meat and eggs to food insecure East End community members.

We recognize health is a community endeavor and we are so grateful to you, our community of support, who have helped us steadily grow, and we invite you to continue this journey with us into 2023 and beyond. Your support will help us re-open Finca Tres Robles and set the foundation for even more farms to come.

Tommy Garcia-Prats  
Executive Director & Co-Founder of Small Places



## OUR MISSION

Small Places' mission is to nurture a culture of health in our communities to renew the bond between people, place and food.

We develop farms as essential health infrastructure to upend systemic inequalities at the neighborhood level. We invest in small solutions as the pathway to realizing larger structural change.

## OUR VISION

Neighborhoods where farms are part of the fabric of the community's daily life and where everyone regardless of age, income, race, or circumstance has the tools to be healthy.

## Board Members

Drew Patton, Retired PDR (Chair)  
Christi Vasquez-Martin, Space Center Houston (Vice Chair)  
Dana Shamas, Expansive Living (Secretary)  
Alan Sheppard, Gulf Star Group (Treasurer)  
Rozina Damani, Chevron  
Breah Koosono-Ampem, Frost Bank  
Mark Garcia-Prats, Greystar





# History

For the last 8 years, Small Places has been cultivating fruits, vegetables, and herbs just east of Downtown Houston through their urban farm, *Finca Tres Robles*. Uniquely striving to keep 100% of its produce in low income, low access communities in Houston's "East End", "*Finca*" focuses on serving their immediate neighborhoods by distributing freshly grown and harvested produce directly to individuals and families.

## Who is Small Places?

We use high impact urban farms in neighborhoods of low access to provide and foster the tools to cultivate health at every level for every person regardless of age, income, race, gender, or circumstance.

### we believe

Quality, nutritious food is a human right.

The food we grow is for our immediate community.

Farms are essential health infrastructure for upending systemic inequalities, especially at the neighborhood level.

What started  
abandoned...

2013



transformed  
to abundance...

2019



less than 400 yards away



2022 - 2062

...now has a new  
long term home.

## A New Beginning

As the second longest serving urban farm in Houston, *Finca Tres Robles* has a track record of community impact. Observing the growing demand and need for their services and the financial limitations of their LLC model, Small Places transitioned to a 501(c)(3) officially receiving IRS approval in May of 2022. This will open new doors for our organization to do more and provide more resources to invest in our east end residents.

## About More than Food

### EDUCATION PROGRAMS

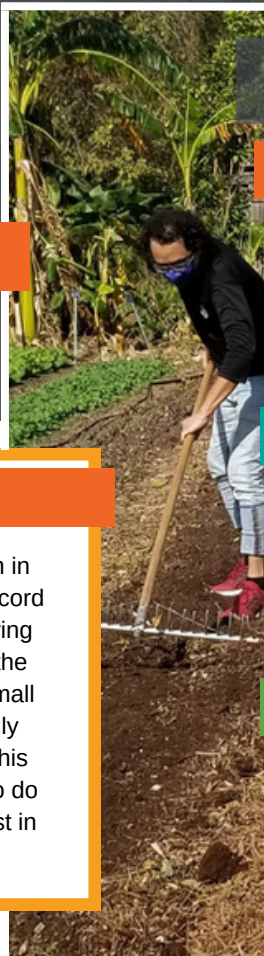
- Field Trips
- Classes
- Workshops
- Farm Tours

### COMMUNITY GATHERING

- On-site Events
- Potlucks
- Farm Dinners
- Performances

### FARMER TRAINING

- Farm Employees
- Apprenticeship Program
- Work Share Program







# Programs + Impact

## Zip Code Level Change

A person's zip code being the best predictor of one's health outcomes is further proof of the systemic nature of our health crisis. Health is much larger than the choices individuals make. Health is a community endeavor that must be cultivated and reinforced by a support system of neighbors, places, and community organizations that activate the routines of healthy living.

Small Places was founded on the recognition that systemic level change was not only possible but necessary and that urban farms built to serve their immediate community are an integral part of a grassroots solution.

## The East End

is rich with history and community pride – but its residents are the victims of the startling reality of poverty in Houston and its adverse effects on our neighbors' health.

### Hard to be Healthy in the East End

- **Lowest rank** for Both Food Insecurity and Health Equity in our County.
- Includes the **lowest scoring zip code** of all 132 zip codes making up Harris County
- Higher rates of obesity and chronic illnesses than local and national averages
- **34%** of local families and **52%** of children live in poverty
- Average Household income is **20% below** the Harris County average

## Area of Impact

While the farm is open to anyone, we strategically focus on impacting communities within 3 miles of *Finca Tres Robles*. Since our founding, we have defined our target audience as households in the Greater East End of Houston that we define as the zip codes 77011, 77012, 77023, & 77003.



Our goal has been to increase food access and decrease food insecurity in our community through food distributions, education, and community building.





# Programs + Impact

Even while our farm is transitioning, we have continued our commitment to providing food support to those who need it most in our community.

## Neighborhood Produce Program

Our Neighborhood Produce Program (NPP) is a free biweekly distribution of locally grown and sourced produce, eggs and meats, delivered directly to food insecure households in our immediate service area. This program specifically addresses the need for food access and a supportive community ecosystem.



### Distribution with a Purpose

In 2022, we donated **958 boxes** of fresh produce, eggs, meat, rice, and beans to those families in our community in need of food assistance on a weekly or biweekly basis.

#### 2022 Deliveries

by the numbers



**14,966 lbs.**  
of locally sourced  
foods distributed

Equivalent of  
**12,472 meals**  
distributed



**\$30,000+**  
sourced from local  
farmers

#### Who are our NPP families?



**80%** live within 1 mile  
of the farm



**90%** earn under \$30k &  
**55%** earn under \$16k/year



**75%** speak Spanish  
as their first language

“

I've lived here all my life. Same house. Now I live here with my daughter and her two kids. We've been receiving the produce for over two years now.

It's been good to get a chance to eat healthy and it's helping me lose weight. Diabetes runs in the family and I'm worried about my grandkids.

We are really thankful. It's been such a blessing.

-Maria D., 66 years old, NPP Member

”

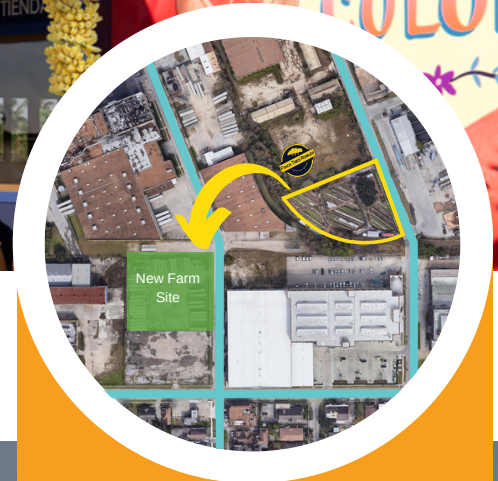






# Our New Home

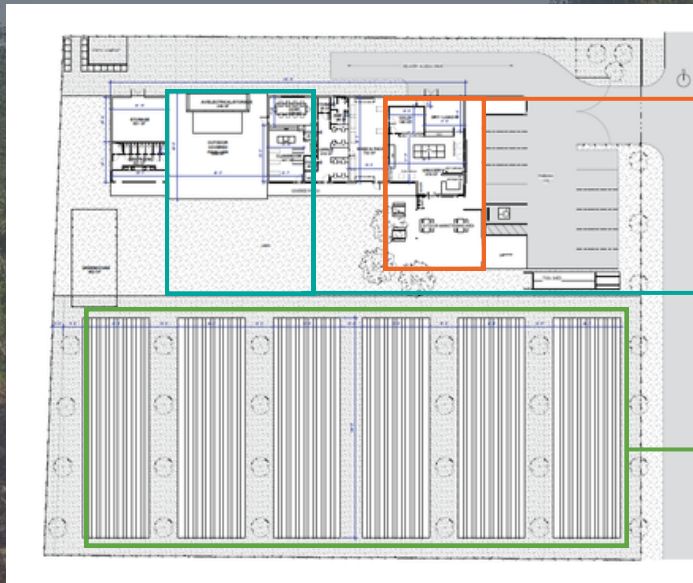
Harris County is providing a 40-year ground lease to the 1.5 acre parcel of land located at 6000 Canal Street. The ground lease has been signed and the 40-year lease went into effect on September 1st of 2022.



The new farm location is only one block away from the original farm site, ensuring we will have a home in this incredible neighborhood for decades to come.

## A Generational Investment

The new farm (1.5 acres) will include the build-out of mission-critical infrastructure, including a grocery store, classroom, and kitchen, a covered pavilion, offices for staff, and an indoor post-harvest station that will enable Small Places to efficiently and safely get healthy foods into the hands of the East End community.



### Farm Fresh Food Store

With an onsite grocery store, we expect to increase the number of households we serve every week from **150 to 450 households**.



### Sustainable Production Farm

An expanded field area will allow our onsite farm production capacity to **increase by at least 50%**.



### Covered Event Pavilion

A Covered Pavilion will allow us to **triple** the number of individuals we can host on the farm for classes and community gathers.





# Financials

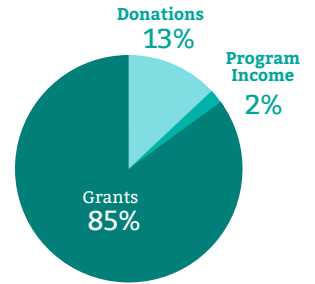
## 2022 Budget Summary

Fiscal Year 2022 was focused on the transition to an official 501c(3) nonprofit organization, fundraising for our capital campaign, and beginning the work to build out our new farm location. The temporary pause in farm operations meant scaling back our team and minimizing our spending with an eye to the future.

We are excited to begin ramping up our work capacity as Small Places nears our goals and breaks ground on construction before the end of 2023. Small Places has been adding team members critical to re-launching our farm and expanding the opportunities that *Finca Tres Robles* provides through the community investments and resources we can bring to these East End neighborhoods.

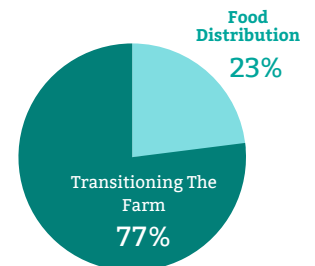
### 2022 Revenue

Grants	85%	\$439,581
Donations	13%	\$69,221
Program Income	2%	\$10,110
<b>Total</b>	<b>100%</b>	<b>\$518,912</b>



### 2022 Expenses

Transitioning The Farm	77%	\$108,583
Food Distribution	23%	\$32,889
<b>Total</b>	<b>100%</b>	<b>\$141,472</b>



## Fundraising & Contributions

### "The First of Many" Capital Campaign

Small Places is raising \$2.7 million over 24 months from philanthropy to fully develop the new *Finca Tres Robles* farm with improved farm land and additional mission critical infrastructure, to expand programming, and to improve the health outcomes of even more residents in the East End.

<b>SOFT COSTS</b> Architect, Civil Engineering, Landscape Architecture, MEP engineering etc.	<b>\$180,000</b>
<b>FARM LAND SITE PREP</b> Site excavation, grading, drainage, soil relocation etc.	<b>\$231,343</b>
<b>CONSTRUCTION</b> Store, Offices, Classroom, Pavilion, Bathrooms, Parking, Detention, etc.	<b>\$1,595,000</b>
<b>OPERATIONS &amp; PROGRAMMING SUPPORT</b> Transitional support, increased staffing capacity pre-revenue, programming start-up	<b>\$693,657</b>
<b>TOTAL</b>	<b>\$2,700,000</b>



\*updated 5/23/22



## Foundations & Awards

Permanent Endowment Foundation of Moody Memorial Methodist Church

CenterPoint Energy Foundation

Keating Family Foundation

The Elkins Foundation

The Brown Foundation, Inc.

Heimbinder Family Foundation

Harris County Healthy Food Financing Initiative

ARPA Reducing Food Insecurity Harris County

USDA Urban Agriculture Innovation & Production

Feeding America Food Equity Impact





# Get Involved

You can join us on our mission to create communities that have strong connections between people, place and food.

## Stay Connected

There will be constant changes and updates ahead for us and we encourage you to follow us on social media, register for our email newsletter, and visit our website to stay connected!



@fincatresrobes  
@smallplacesmatter

[www.smallplaces.org](http://www.smallplaces.org)



## Volunteer with the Farm

If you prefer to give your time, you or your organization can coordinate a time to volunteer at the farm or in upcoming volunteer events.

Visit: [smallplaces.org](http://smallplaces.org) | Email: [info@smallplaces.org](mailto:info@smallplaces.org)



## Share Our Work

Connecting others to our work is essential in establishing a network to provide the resources our community needs.

Visit: [smallplaces.org](http://smallplaces.org) | Email: [info@smallplaces.org](mailto:info@smallplaces.org)



## Make a Donation

Your generous donations go to support our community work in the neighborhood and develop our new farm.

Visit: [donate.smallplaces.org](http://donate.smallplaces.org) | Scan QR Code

## Every Contribution Counts

Thank you to everyone who contributed to our campaign in 2022

Adriana Lilly	David Woodard	Lawrence Lander
Alan Sheppard	Diana Wilson	Lisa Madry
Amy Dinn	Diane Schenke	Lynn Morstead
Angelica Garza	Douglas Hellmann	Marcia Jackson
Angi Patton	Elaine Cali	Marcia Jackson
Ann Christensen	Elizabeth Newton Hayes	Marcie Mir
Anna Foret	Erika Hornsey	Martha Lawler
Anthony D Banks	Helen Stewart	Matthew Donovan
Austin Allday	Ileri Perez	Patricia Hsing
Beth Braun	James Garcia-Prats	Paul Donovan
Blanca Garza	Jan Van Lohuizen	Rachel Aaronson
Charles Sommer	Jennifer Hadayia	Rozina Damani
Chevon Charity	John Aguerre	Sam Newman
Chris Broome	John Weaver	Sarah Arvidsson
Christian Siboldi	Jonathan Schenke	Scott Snodgrass
Chuck Jackson	Joe & Cathy Garcia-Prats	Stephanie Roe
Cristina Contreras	Joy Jones	Susan Graham
Dana Shamas	Julia Doran	Teri Ogg
Daniel Levitt	Karen Hayward	Trudi Smith
Darla Berry		William Burkett
David Morris		

## Be a Champion in Our Capital Campaign

We invest in small solutions as the pathway to realizing larger long-term structural change.

Join us as we develop the first of many urban farms in Houston by becoming a donor to our **First Of Many: Capital Campaign**.

Together we can be a part of the solution to healthier, more equitable communities.



to learn more  
on how to give

Scan QR or visit  
[donate.smallplaces.org](http://donate.smallplaces.org)



## Naming Opportunities



- **Pavilion** - \$200,000
- **Classroom** - \$175,000
- **Farm Store** - \$125,000
- **Three Oak Trees** - \$25,000 - Sold October 2022
- **Post Harvest Station** - \$50,000
- **Arbor & Picnic Area** - \$40,000
- **Rescued Oak Tree Bench Sponsorship** - 10 @ \$10,000 each
- **Sponsor a Fruit Tree** - 40 @ \$1,000 each







# Help keep our farm growing.

## Join us to launch our new farm.

You and your organization can play a vital role in making this a reality!

## Make a donation

Your gifts can help sustain our farm for years to come.

To learn more about  
Small Places & Finca Tres Robles



@fincatresrobes

@smallplacesmatter

[www.smallplaces.org](http://www.smallplaces.org)



**SMALL  
PLACES**  
lugarcitos